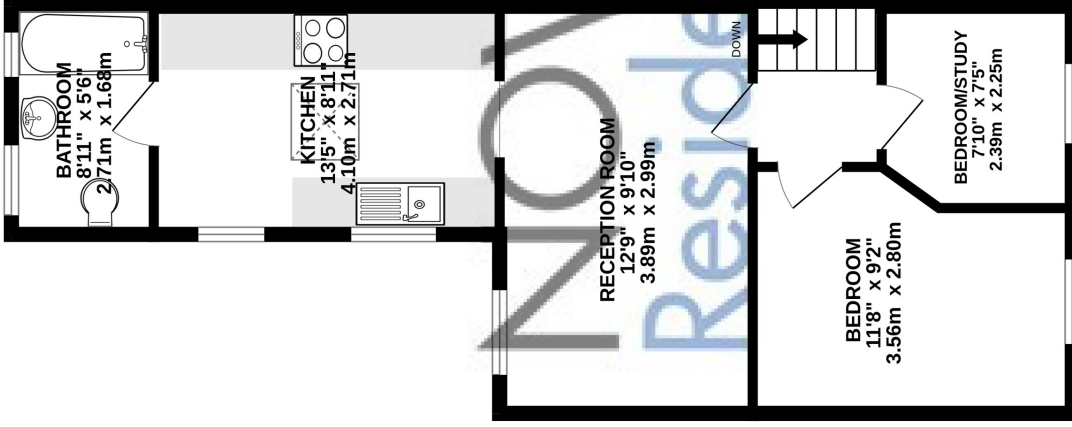


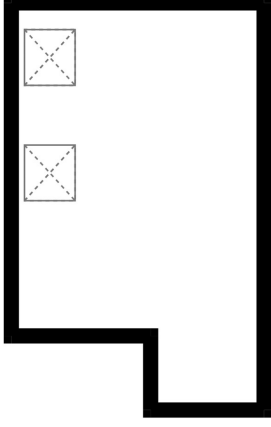
GROUND FLOOR  
17.94m<sup>2</sup> (164.7sq.m) approx.



1ST FLOOR  
52.6m<sup>2</sup> (483.9sq.m) approx.



2ND FLOOR  
14.0m<sup>2</sup> (124.9sq.m) approx.



NOVUS Residential



LEA ROAD

TOTAL FLOOR AREA : 677 sq.ft. (62.9 sq.m.) approx.

Whilst every attempt has been made to ensure the accuracy of the floorplan contained here, measurements of doors, windows, rooms and any other items are approximate and no responsibility is taken for any error, omission or mis-statement. This plan is for illustrative purposes only and should be used as such by any prospective purchaser. The services, systems and appliances shown have not been tested and no guarantee as to their operation or performance can be given.  
Made with Metropix ©2024