

NOVUS Residential

SALES
LETTINGS
MANAGEMENT

WADES HILL, WINCHMORE HILL, N21



A newly refurbished one-bedroom apartment located on the ground floor of this attractive red brick building in the heart of Winchmore Hill. The accommodation, which extends to approximately 350 sq ft, comprises entrance hall with doors leading to: open plan reception/kitchen (fully aplianced) which benefits from contemporary styling and skylight providing an abundance of natural light. The bedroom benefits from a built-in wardrobe and there is a fully tiled shower room. The property is presented in immaculate condition throughout.

The property affords convenient access to Winchmore Hill Greens numerous independent businesses including restaurants, gastro pubs, coffee shops and delicatessens. Grovelands Park with its green open spaces, woods, tennis courts and pitch and putt course is also nearby. Winchmore Hill Station (Overground) provides regular commuter services to both Londons Moorgate and Kings Cross Stations.

£1,350 PCM

Unfurnished

Available: 1st August

0208 350 8936

zoopla

rightmove 
find your happy

move@novusresidential.co.uk

PRS Property
Redress
Scheme



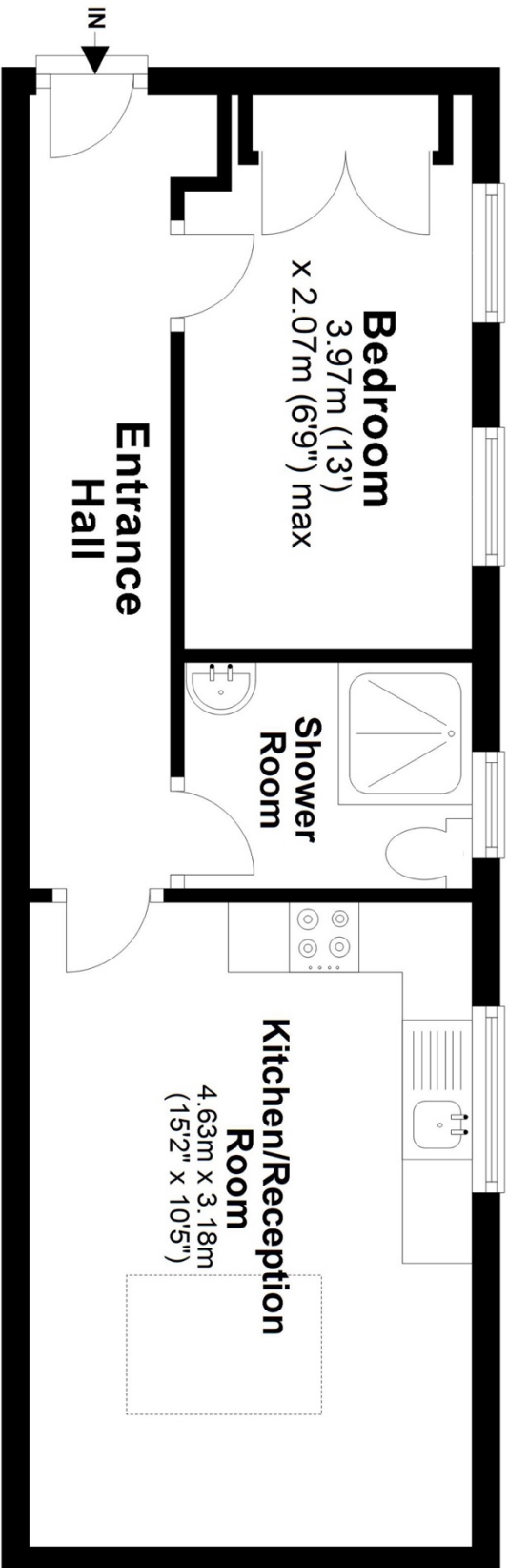


Council Tax - TBC (Enfield)



Ground Floor

Approx. 33.1 sq. metres (356.6 sq. feet)



Total area: approx. 33.1 sq. metres (356.6 sq. feet)

Plan and measurements are for guidance only. Floor plan produced by

Propertypics.co.uk.

www.propertypics.co.uk

Plan produced using PlanUp.

- These particulars are offered on the understanding that all negotiations are conducted through this company.
- These details and photographs have been prepared for "Novus Residential" in good faith and as a general guide, not a statement of fact.
- Neither these particulars, nor oral representations, form part of any offer or contract and their accuracy cannot be guaranteed.
- Any floor plan provided is for representation purposes only, measurements are approximate and should not be relied upon, whilst every attempt has been made to ensure their accuracy the measurements of windows, doors and rooms are approximate and should be used as such by prospective purchasers.
- We have not tested any services, systems and appliances mentioned and we cannot verify that they are in working order.
- Should you have a query or complaint about our service, please contact us at move@novusresidential.co.uk.