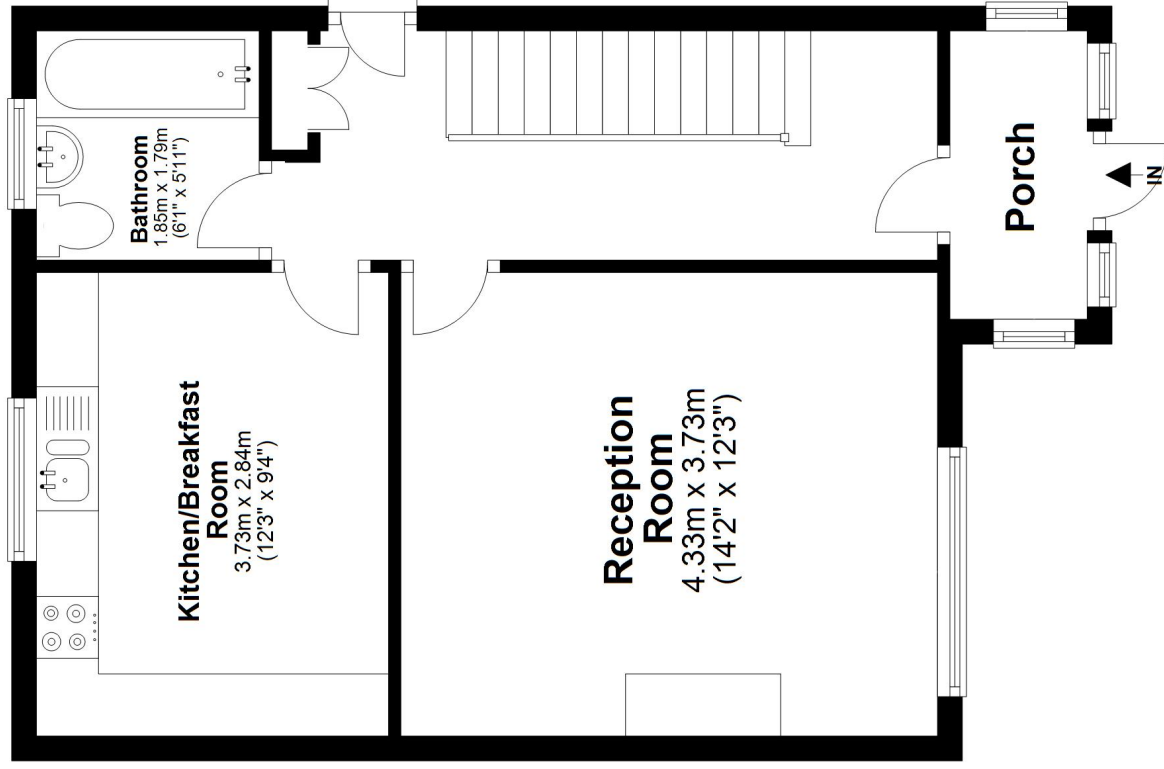


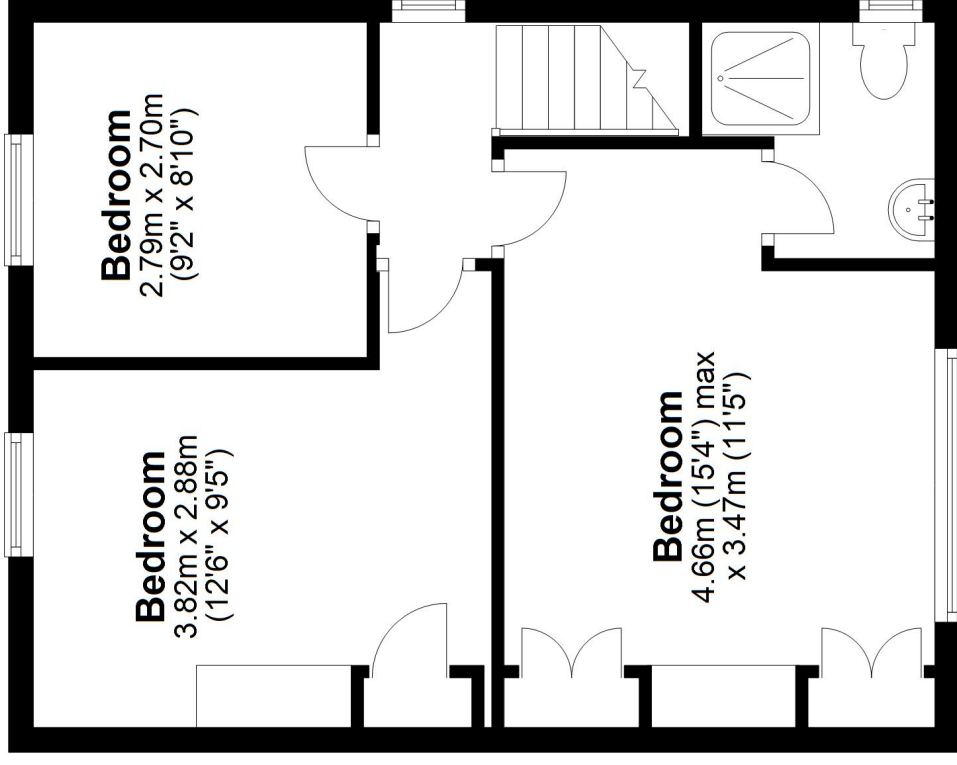
Ground Floor

Approx. 44.1 sq. metres (474.3 sq. feet)



First Floor

Approx. 41.9 sq. metres (451.3 sq. feet)



Total area: approx. 86.0 sq. metres (925.6 sq. feet)

Plan and measurements are for guidance only. Floor plan produced by Propertytics.co.uk.

www.propertytics.co.uk

Plan produced using PlanUp.