

Culloden Road, EN2

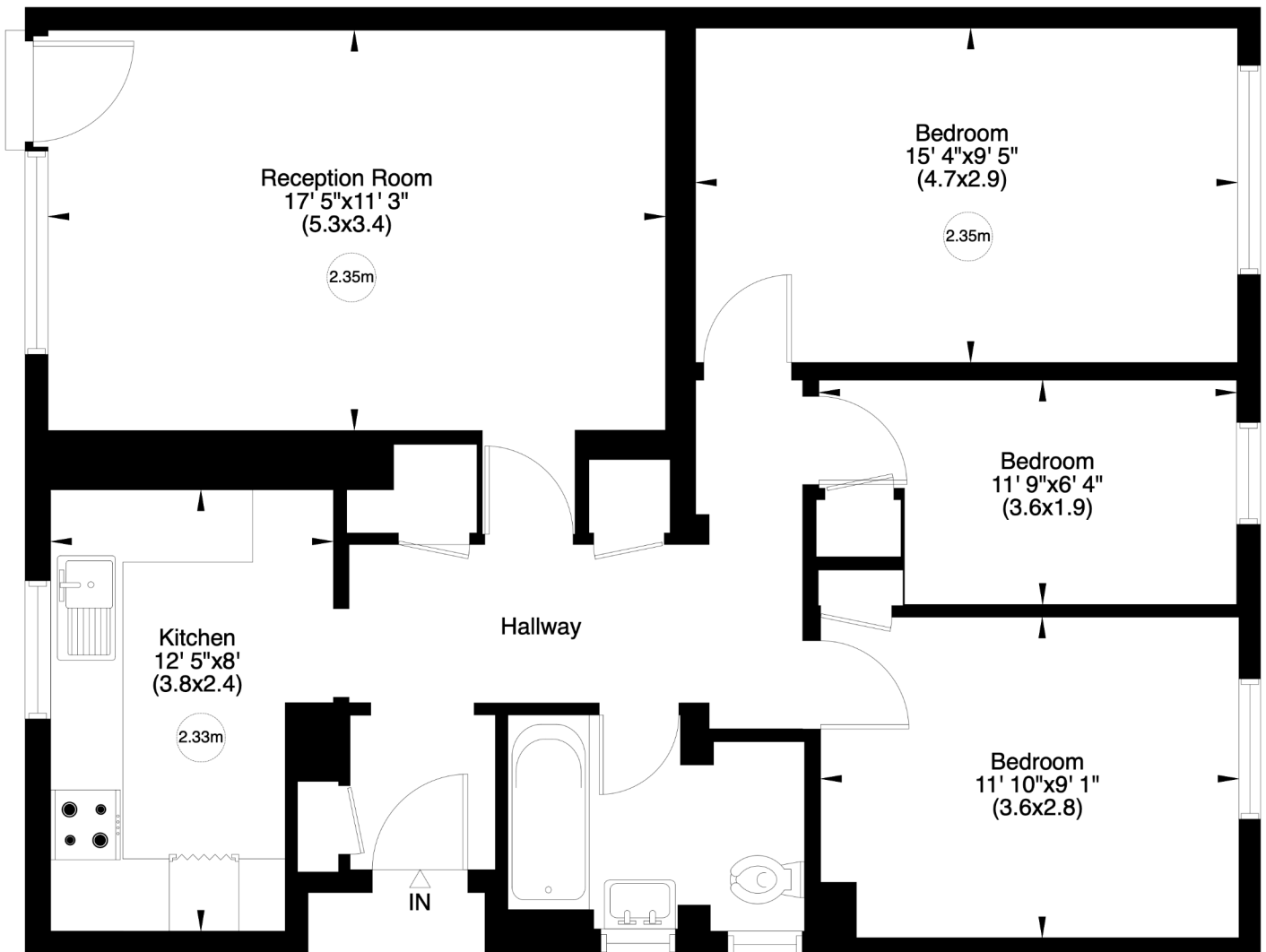
Gross internal area (approx.)

79 Sq m (846 Sq ft)

For identification only, Not to Scale



www.virtualtours.london



First Floor

Not to scale, for guidance only and must not be relied upon as a statement of fact. All measurements and areas are approximate only (and have been prepared in accordance with the current edition of the RICS Code of Measuring Practice).