

NOVUS Residential

SALES
LETTINGS
MANAGEMENT

ROSCOE STREET, LONDON, EC1Y



A newly decorated purpose built one bedroom apartment located on the first floor of this centrally located building affording easy access to the many and varied amenities upon your doorstep. The accommodation, which extends to approximately 475 sq ft comprises entrance hall with integrated storage cupboards and doors to: reception room, with door to south facing balcony, separate applianced galley kitchen, bedroom with built in wardrobe and bathroom suite. The property features laminate wood flooring to reception and is UPVC double glazed throughout.

Roscoe Street is located just off of Whitecross Street with its famed street market and close to the heart of the evolving Tech City. The Barbican Performing Arts Centre is a short walk south, offering a wealth of public facilities, including a theatre, art gallery, music venue, cinema, and several bars and cafes. The property has easy access to an abundance of transport options being equidistant from Old Street Station (Overground & Northern Line), Barbican Underground Station and Liverpool Street. Numerous bus routes also serve the locale.

£1,750 PCM

Part-Furnished

Available Now

0208 350 8936

move@novusresidential.co.uk

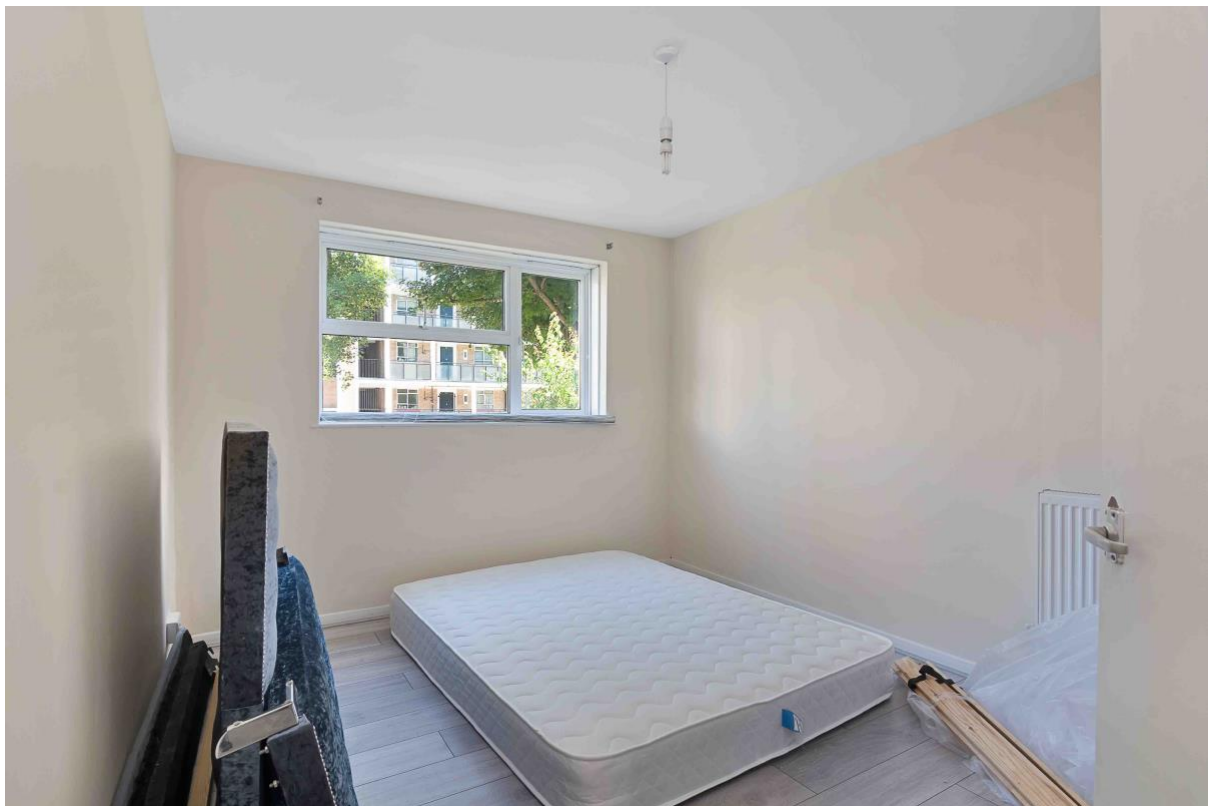
ZOOPLA

rightmove 
find your happy

PRS Property
Redress
Scheme



Council Tax: Band C £1,520 (Islington)



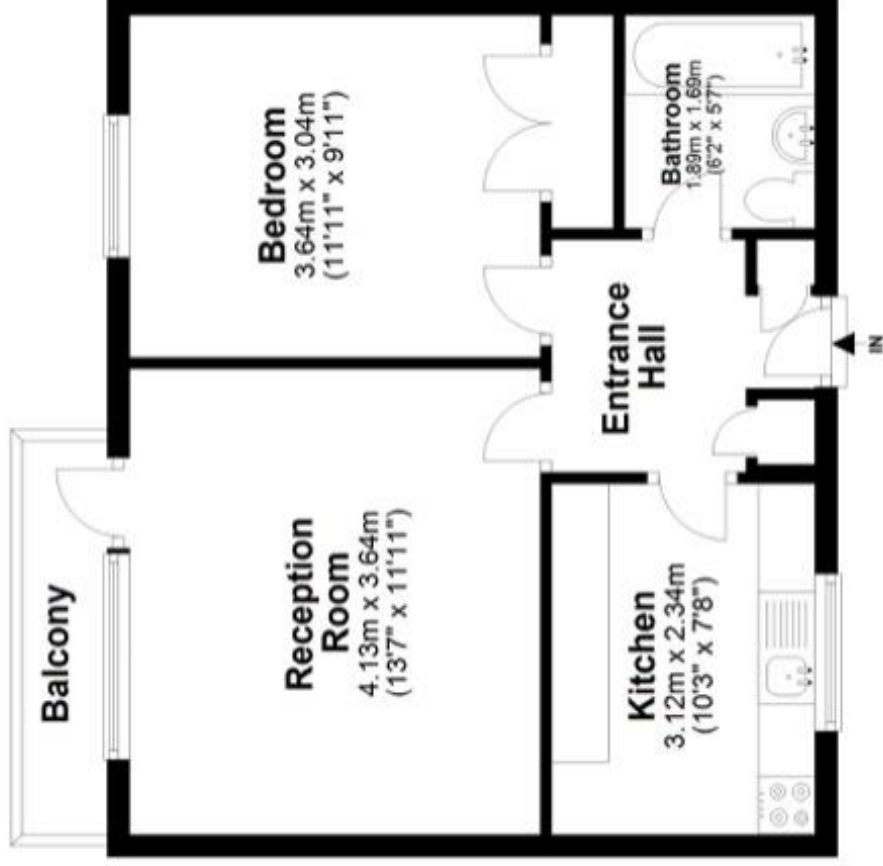




- These particulars are offered on the understanding that all negotiations are conducted through this company.
- These details and photographs have been prepared for "Novus Residential" in good faith and as a general guide, not a statement of fact.
- Neither these particulars, nor oral representations, form part of any offer or contract and their accuracy cannot be guaranteed.
- Any floor plan provided is for representation purposes only, measurements are approximate and should not be relied upon, whilst every attempt has been made to ensure their accuracy the measurements of windows, doors and rooms are approximate and should be used as such by prospective purchasers.
- We have not tested any services, systems and appliances mentioned and we cannot verify that they are in working order.
- Should you have a query or complaint about our service, please contact us at move@novusresidential.co.uk

First Floor

Approx. 44.2 sq. metres (475.5 sq. feet)



Total area: approx. 44.2 sq. metres (475.5 sq. feet)

Plan and measurements are for guidance only. Floor plan produced by Propertytics.co.uk.

www.propertytics.co.uk

Plan produced using PlanUp.