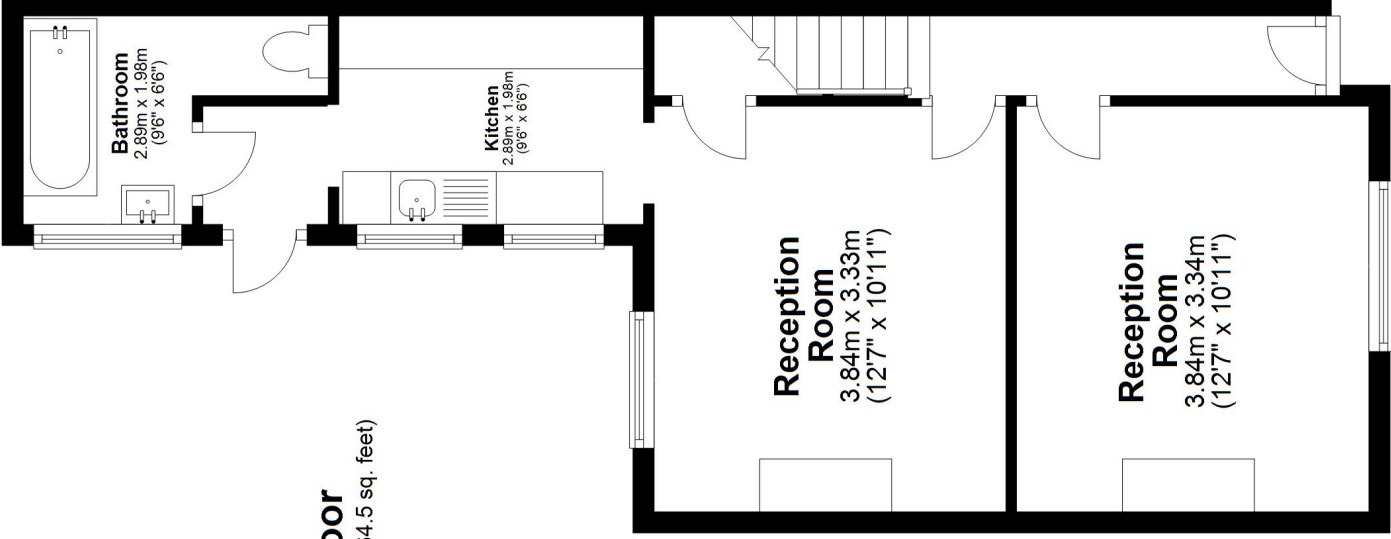


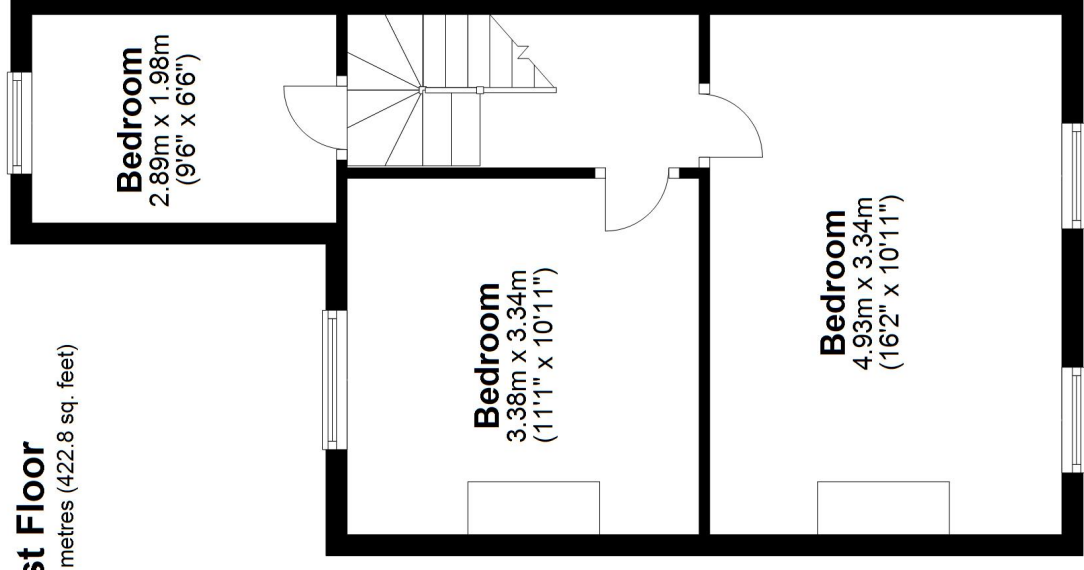
Ground Floor

Approx. 43.2 sq. metres (464.5 sq. feet)



First Floor

Approx. 39.3 sq. metres (422.8 sq. feet)



Total area: approx. 82.4 sq. metres (887.4 sq. feet)

Plan and measurements are for guidance only. Floor plan produced by Propertytics.co.uk.

www.propertytics.co.uk

Plan produced using PlanUp.