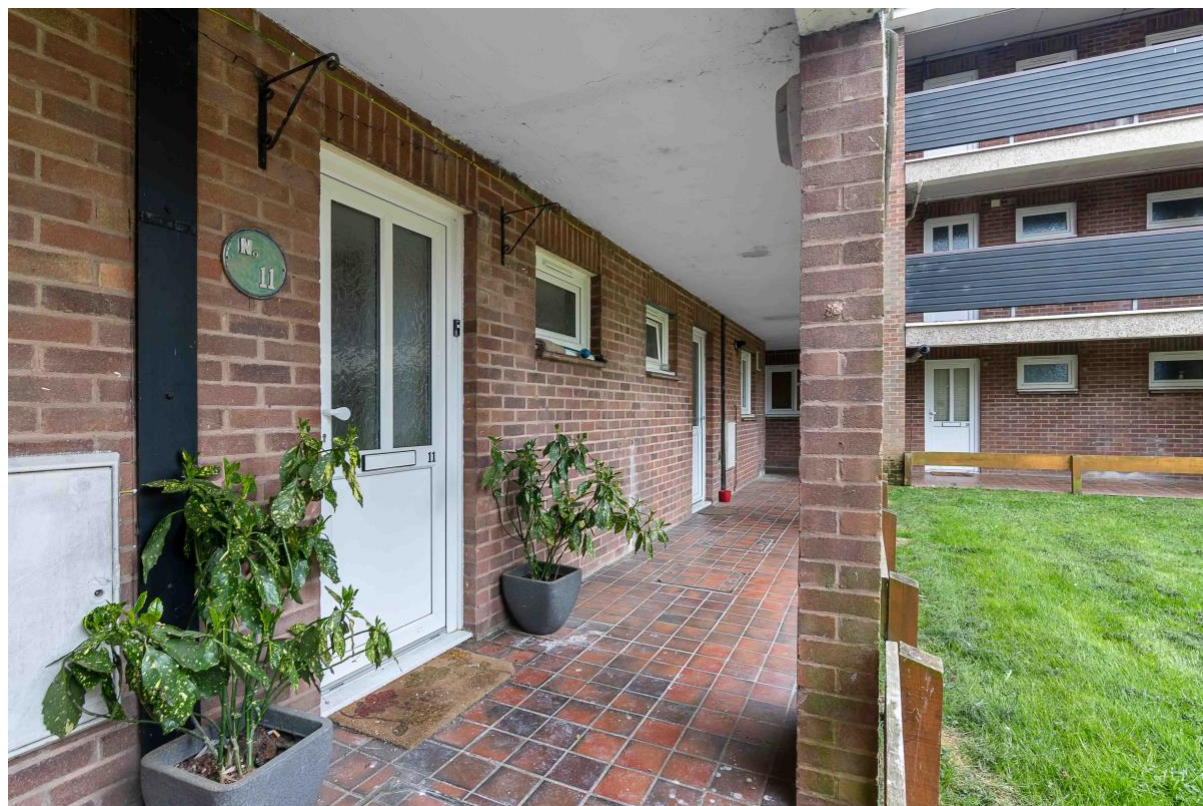


NOVUS Residential

SALES
LETTINGS
MANAGEMENT

THUNDRIDGE COURT, WELWYN GARDEN CITY, AL7



A well-presented, newly decorated, two-bedroom ground floor flat situated in the Panshanger area of Welwyn Garden City. The accommodation which extends to approximately 542. ft, comprises of an entrance hall with doors leading to: the reception, kitchen, two bedrooms, a family bathroom, and a large store cupboard. The block benefit includes communal parking.

Thundridge Court is located nearby to the centre of Welwyn Garden City, therefore being well located to the shopping centre and several leisure amenities which the area has to offer. It also provides easy access to Welwyn Garden City bus station which provides services to Stevenage and Waltham Cross, and the Welwyn Garden City train Station's regular commuter services to London's Moorgate and Kings Cross Stations.

£950 PCM

Unfurnished

Available: IMMEDIATELY

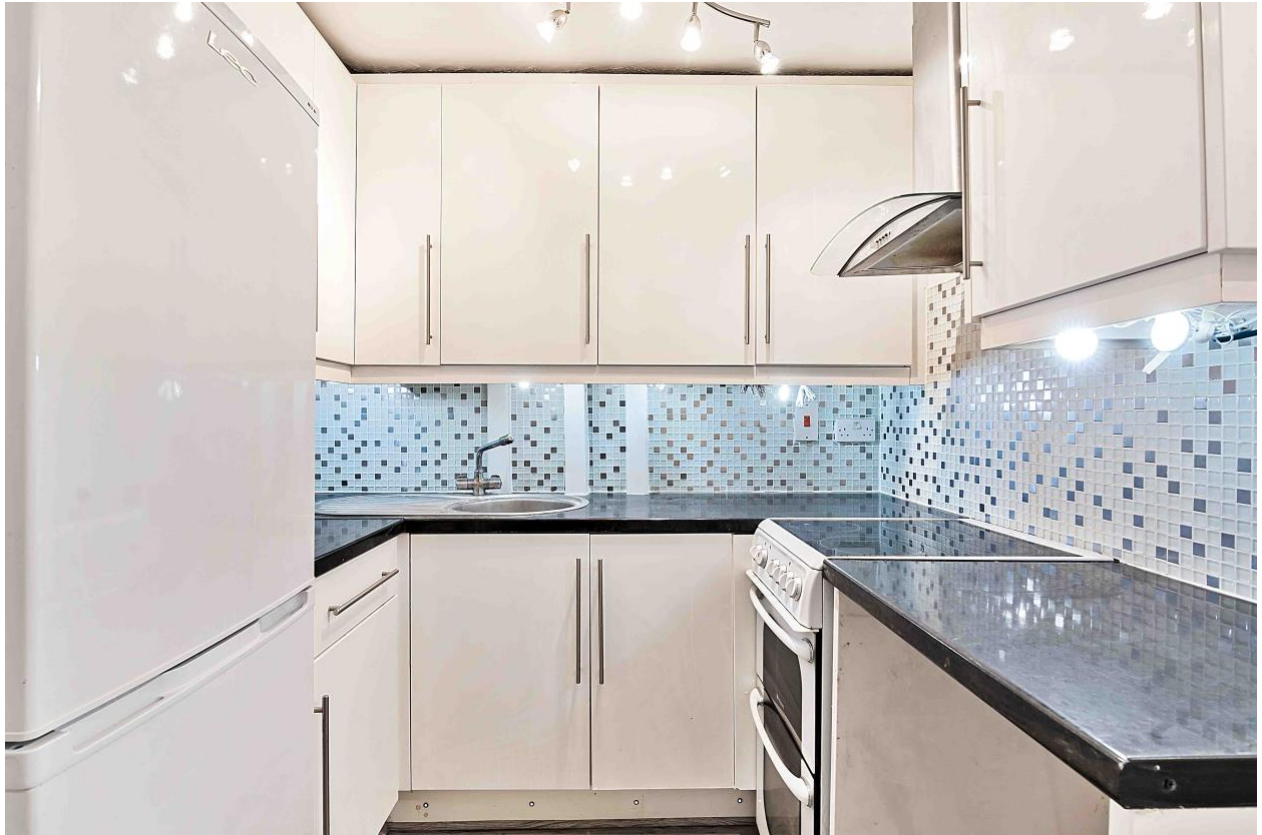
0208 350 8936

move@novusresidential.co.uk

rightmove 
find your happy

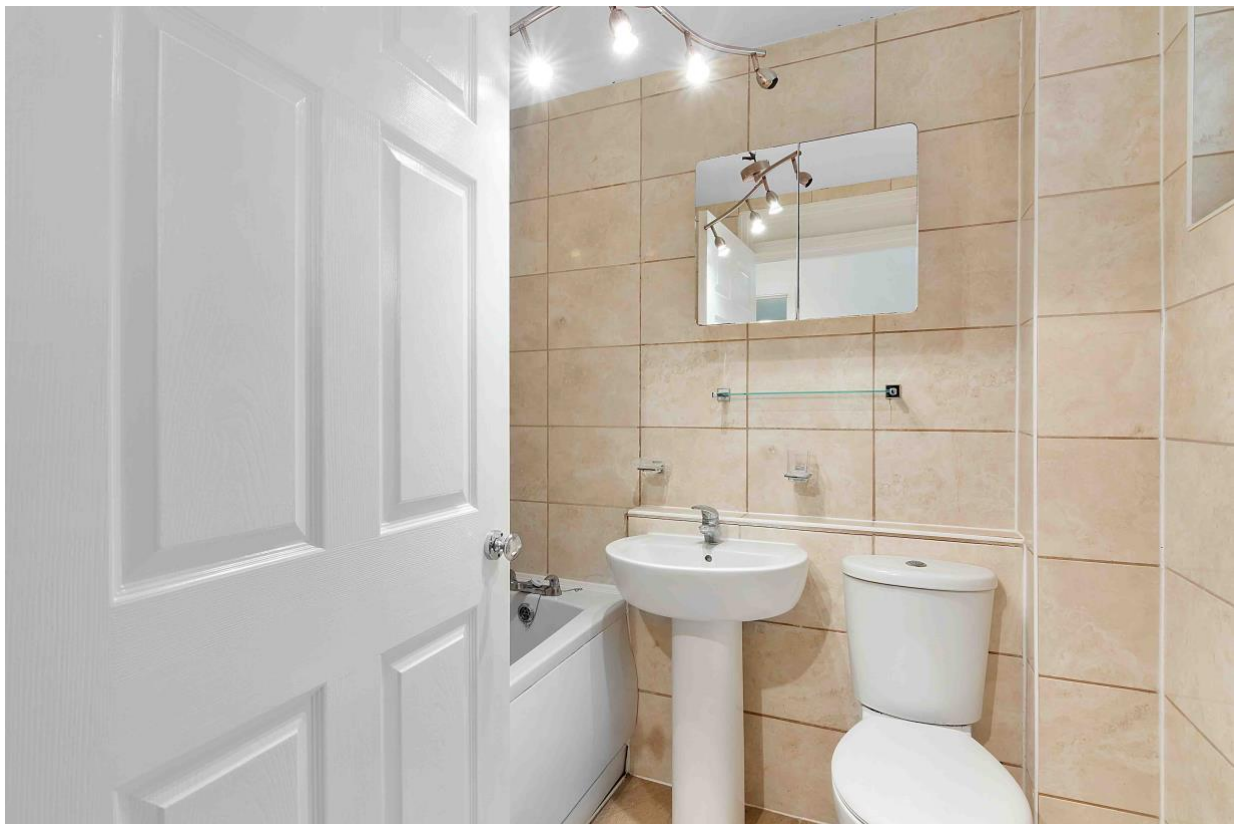
ZPG

PRS Property
Redress
Scheme

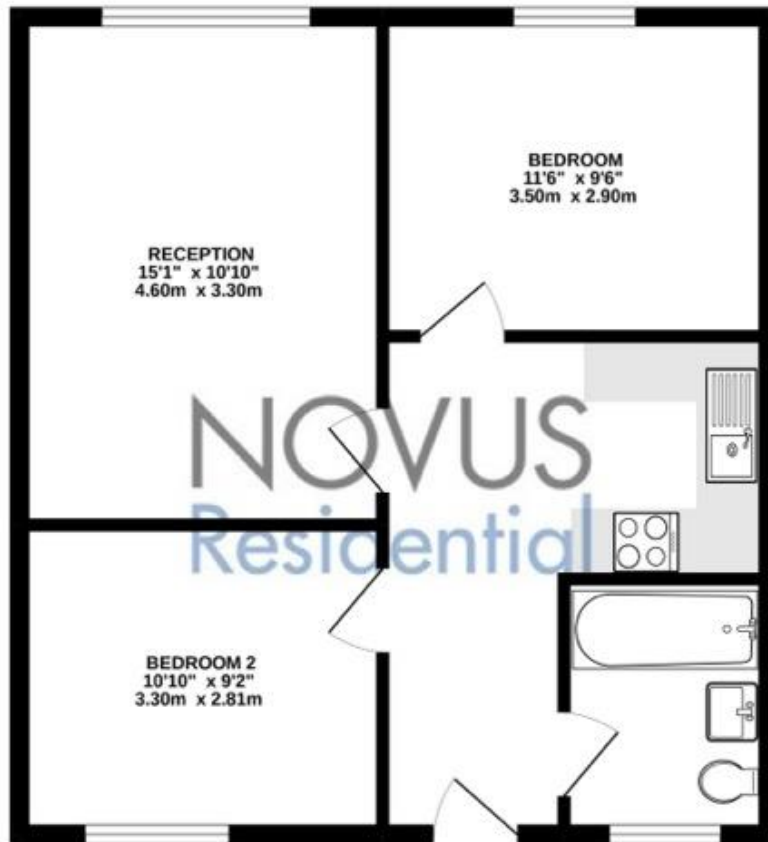


Council Tax - Band B £1,571 (Welwyn Hatfield)





GROUND FLOOR
542 sq.ft. (50.4 sq.m.) approx.



THUNBRIDGE COURT

TOTAL FLOOR AREA: 542 sq.ft. (50.4 sq.m.) approx.

Whilst every attempt has been made to ensure the accuracy of the floorplan contained herein, measurements of doors, windows, rooms and any other items are approximate and no responsibility is taken for any error, omission or mis-statement. The plan is for illustration purposes only and should be used as such by any prospective purchaser. The services, systems and appliances shown have not been tested and no guarantee as to their operability or efficiency can be given.
Made with hatching 10/2012

- These particulars are offered on the understanding that all negotiations are conducted through this company.
- These details and photographs have been prepared for "Novus Residential" in good faith and as a general guide, not a statement of fact.
- Neither these particulars, nor oral representations, form part of any offer or contract and their accuracy cannot be guaranteed.
- Any floor plan provided is for representation purposes only, measurements are approximate and should not be relied upon, whilst every attempt has been made to ensure their accuracy the measurements of windows, doors and rooms are approximate and should be used as such by prospective purchasers.
- We have not tested any services, systems and appliances mentioned and we cannot verify that they are in working order.
- Should you have a query or complaint about our service, please contact us at move@novusresidential.co.uk.