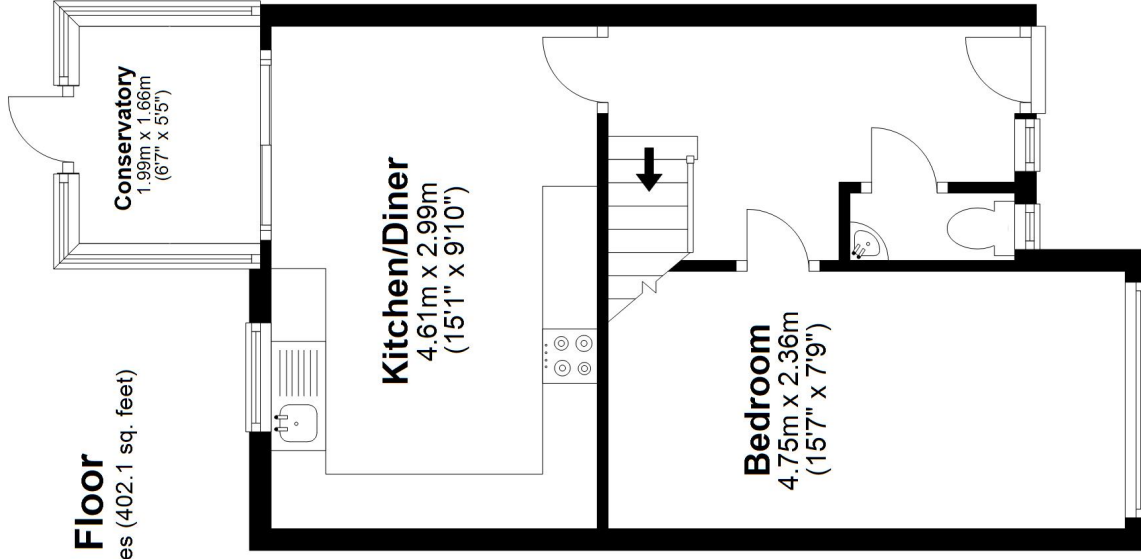


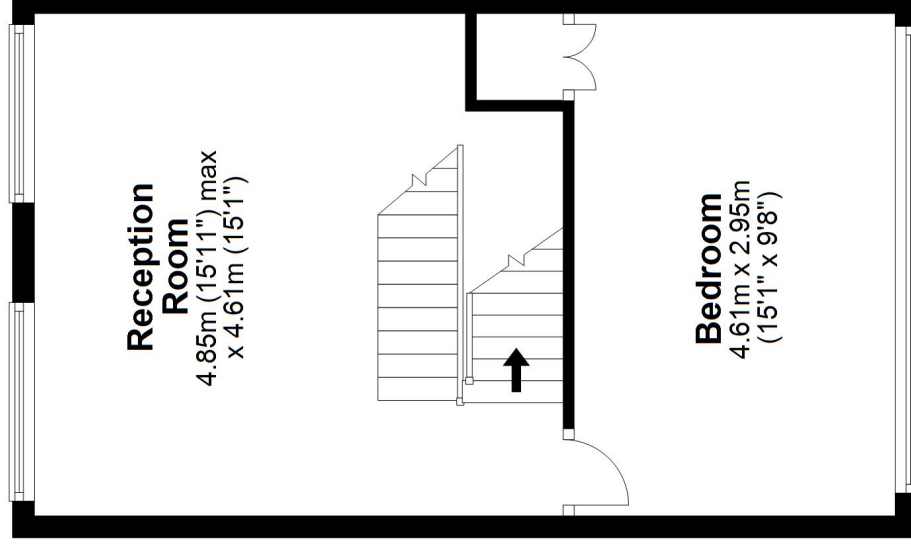
Ground Floor

Approx. 37.4 sq. metres (402.1 sq. feet)



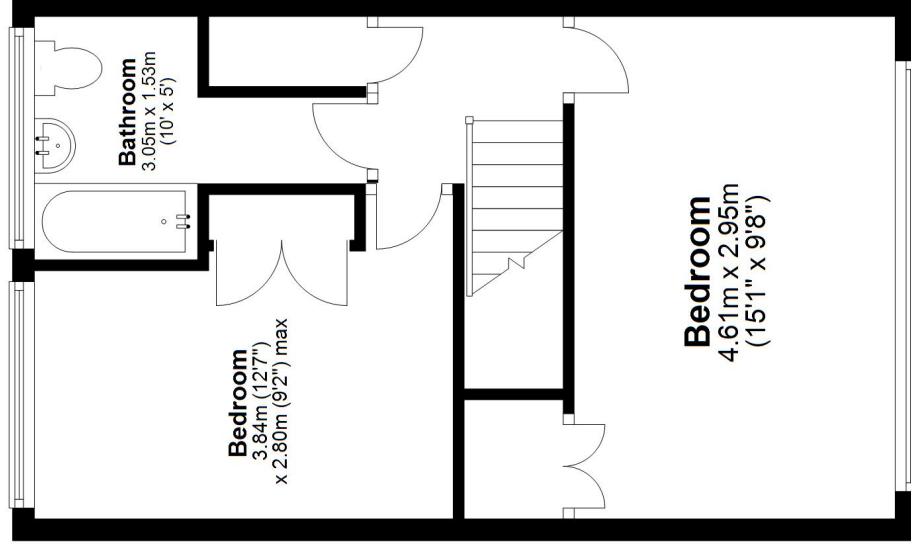
First Floor

Approx. 36.4 sq. metres (391.9 sq. feet)



Second Floor

Approx. 36.0 sq. metres (387.7 sq. feet)



Total area: approx. 109.8 sq. metres (1181.6 sq. feet)

Plan and measurements are for guidance only. Floor plan produced by Propertypics.co.uk.

www.propertypics.co.uk

Plan produced using PlanUp.