

NOVUS Residential

SALES
LETTINGS
MANAGEMENT

DANZIGER WAY, BOREHAMWOOD, WD6



A well-presented two-bedroom terraced house, with private garden and designated parking space located within a sought after quiet residential cul de sac on Danziger Way which forms part of the ever popular Studio Way development. The accommodation which extends to approx. 750 sqft comprises on the ground floor of a porch, reception room, kitchen / diner and conservatory with doors leading on to a private rear garden. The first floor consists of two double bedrooms and family bathroom.

Danziger Way is quiet cul de sac which is well located for the shops and amenities of Borehamwood. The local area has good transport links with road links to the A1 and M25. The local mainline train station is Elstree & Borehamwood which is a short 5-minute drive from the house or a 15-20 minute walk and provides zone 6 travel into London. The local schools in the area are Hertswood Academy and Woodlands Primary School, both schools are within a short walking distance from the property.

£1,450 PCM

Un-Furnished

Available IMMEDIATELY

0208 350 8936

move@novusresidential.co.uk

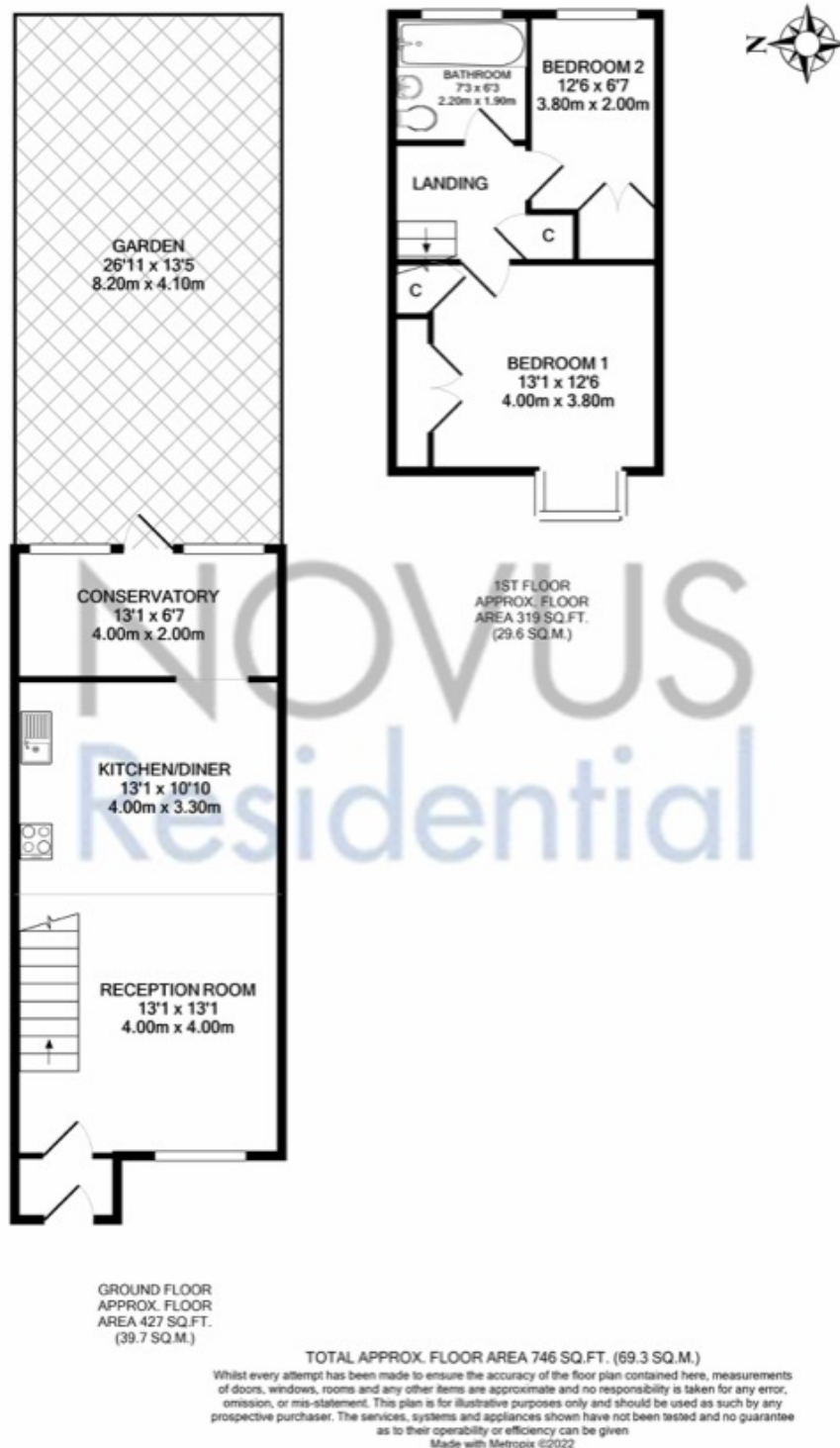
rightmove 
find your happy

ZPG

PRS Property
Redress
Scheme







Council Tax – C £1,689 (Borehamwood)

- These particulars are offered on the understanding that all negotiations are conducted through this company.
- These details and photographs have been prepared for "Novus Residential" in good faith and as a general guide, not a statement of fact.
- Neither these particulars, nor oral representations, form part of any offer or contract and their accuracy cannot be guaranteed.
- Any floor plan provided is for representation purposes only, measurements are approximate and should not be relied upon, whilst every attempt has been made to ensure their accuracy the measurements of windows, doors and rooms are approximate and should be used as such by prospective purchasers.
- We have not tested any services, systems and appliances mentioned and we cannot verify that they are in working order.
- Should you have a query or complaint about our service, please contact us at move@novusresidential.co.uk.