

NOVUS Residential

SALES
LETTINGS
MANAGEMENT

WESTON CLOSE, POTTERS BAR, EN6



A two-bedroom ground floor maisonette with its own entrance and parking space which is superbly located for access to the shops and Station of Potters Bar. The property, which extends to approx 615 sqft, comprises entrance hall with large integrated store cupboard and doors leading to: reception room, separate kitchen, two bedrooms and family bathroom. The property also benefits from off street parking, double glazing throughout, independent hot water and heating and its own entrance.

Weston Close is a quiet residential turning which is conveniently positioned for access to the numerous shops and restaurants of Darkes Lane and Potters Bar Overground Station (First Capital Connect) which offers direct services to Kings Cross and Moorgate Stations. For the motorist, the A1M and M25 are within easy reach.

£355,000 (STC)

Share of Freehold

Chain Free

0208 350 8936

rightmove 
find your happy

 **ZPG**

move@novusresidential.co.uk

PRS Property
Redress
Scheme

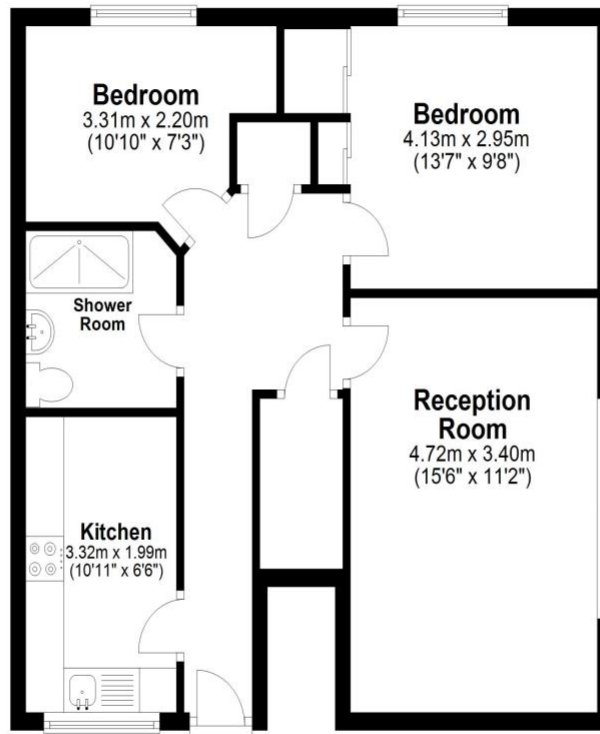


Tenure: **Share of Freehold**

Service Charge: **£80 per month.**

Ground Floor

Approx. 57.2 sq. metres (616.0 sq. feet)



Total area: approx. 57.2 sq. metres (616.0 sq. feet)

Plan and measurements are for guidance only. Floor plan produced by Propertytics.co.uk.

www.propertytics.co.uk
Plan produced using PlanUp.

- These particulars are offered on the understanding that all negotiations are conducted through this company.
- These details and photographs have been prepared for "Novus Residential" in good faith and as a general guide, not a statement of fact.
- Neither these particulars, nor oral representations, form part of any offer or contract and their accuracy cannot be guaranteed.
- Any floor plan provided is for representation purposes only, measurements are approximate and should not be relied upon, whilst every attempt has been made to ensure their accuracy the measurements of windows, doors and rooms are approximate and should be used as such by prospective purchasers.
- We have not tested any services, systems and appliances mentioned and we cannot verify that they are in working order.
- Should you have a query or complaint about our service, please contact us at move@novusresidential.co.uk