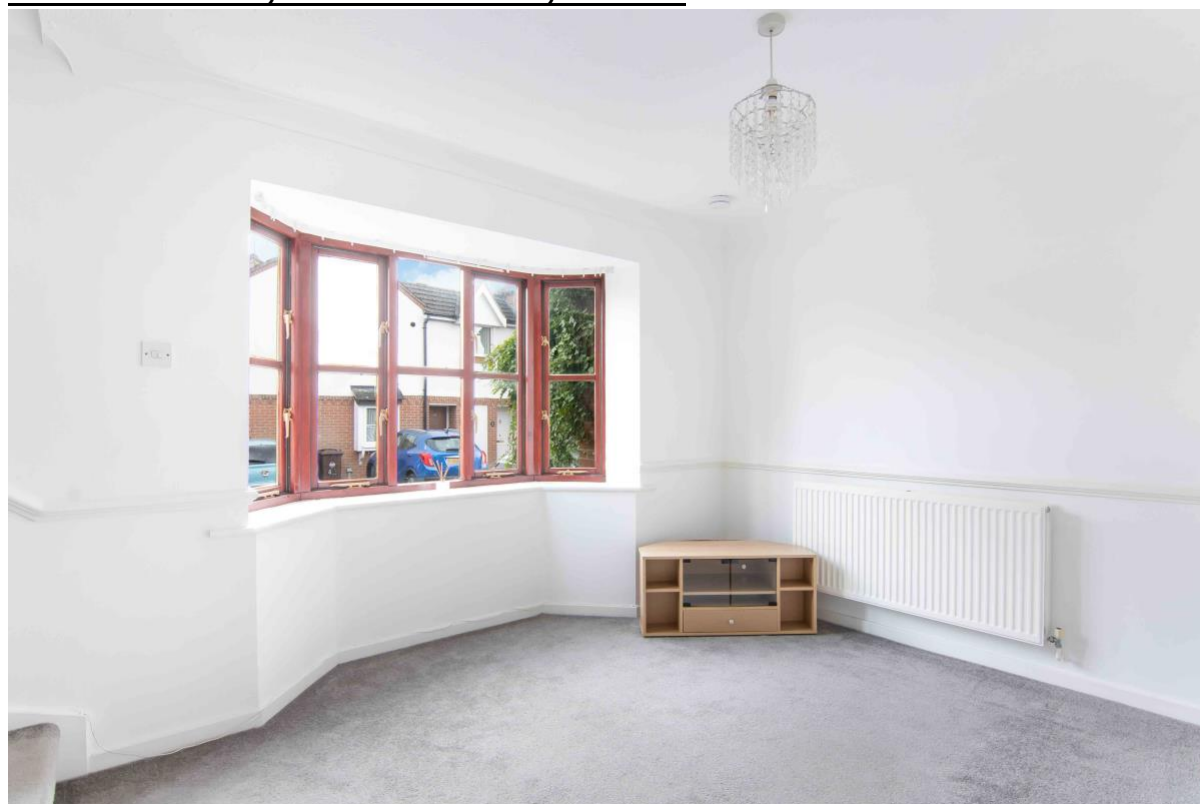


NOVUS Residential

SALES
LETTINGS
MANAGEMENT

CUBLANDS, HERTFORD, SG13



A well-presented two bedroom terraced house with private patio garden and designated parking space situated in the popular Foxholes development. The property, which is presented in good condition throughout, extends to approximately 565 sqft, and comprises entrance lobby and then doors leading to reception room with direct access to the garden and separate kitchen. The first floor offers two bedrooms and family bathroom suite.

Cublands is located in the quiet and sought-after Foxholes area of Hertford. Transport wise there are several bus routes that serve the locale and Hertford East and North offer regular commuter services to London. The A414 and A1(M) are also easily accessible.

£1,150 PCM

Unfurnished

Available: Immediately

0208 350 8936

move@novusresidential.co.uk

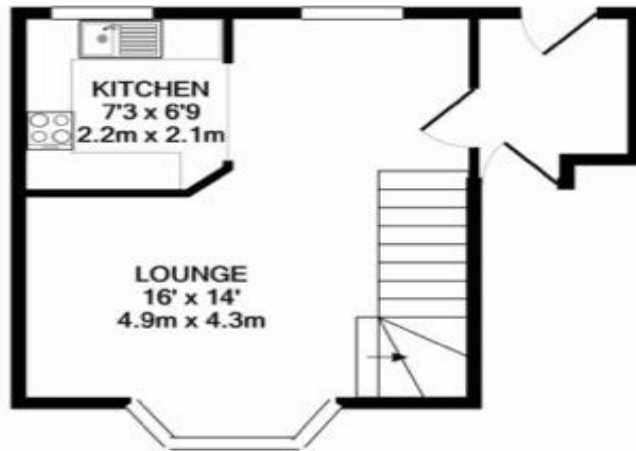
 **rightmove**
find your happy

Zoopla
Smarter property search

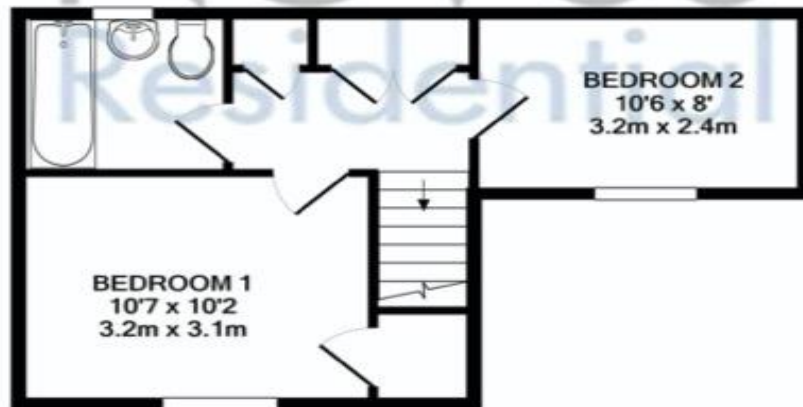
PRS Property
Redress
Scheme



Council Tax - £1,726.00 (East Hertfordshire)



GROUND FLOOR



1ST FLOOR

TOTAL APPROX. FLOOR AREA 567 SQ.FT. (52.7 SQ.M.)

Whilst every attempt has been made to ensure the accuracy of the floor plan contained here, measurements of doors, windows, rooms and any other items are approximate and no responsibility is taken for any error, omission, or mis-statement. This plan is for illustrative purposes only and should be used as such by any prospective purchaser. The services, systems and appliances shown have not been tested and no guarantee as to their operability or efficiency can be given
Made with Metropix ©2021

- These particulars are offered on the understanding that all negotiations are conducted through this company.
- These details and photographs have been prepared for "Novus Residential" in good faith and as a general guide, not a statement of fact.
- Neither these particulars, nor oral representations, form part of any offer or contract and their accuracy cannot be guaranteed.
- Any floor plan provided is for representation purposes only, measurements are approximate and should not be relied upon, whilst every attempt has been made to ensure their accuracy the measurements of windows, doors and rooms are approximate and should be used as such by prospective purchasers.
- We have not tested any services, systems and appliances mentioned and we cannot verify that they are in working order.
- Should you have a query or complaint about our service, please contact us at move@novusresidential.co.uk.