

NOVUS Residential

SALES
LETTINGS
MANAGEMENT

GIRTON COURT, LONDON, N20



A beautifully presented one-bedroom second floor apartment situated in this secure gated development with an underground parking space and private gym. The accommodation comprises reception room, kitchen, bedroom with en suite bathroom and guest cloakroom. The property benefits from private balcony, ample storage, dishwasher, passenger lift and entryphone.

Girton Court forms part of Magdalene Gardens which is a modern gated development that is well located for access to the numerous shops and restaurants that Whetstone, Southgate and East Barnet have to offer. Transport wise Oakleigh Park and Southgate are the closest train stations and there are also several bus routes that serve the locale.

£1200 PCM

Furnished

Available: 4th October

0208 350 8936

rightmove 
find your happy

ZPG

move@novusresidential.co.uk

PRS Property
Redress
Scheme

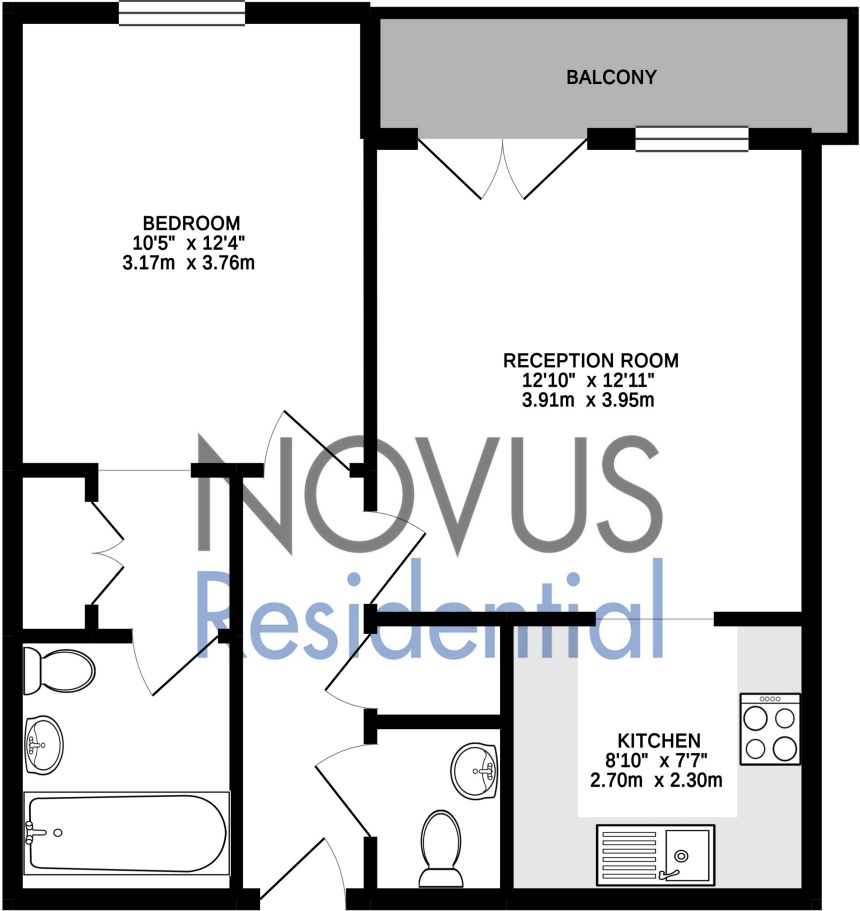




- These particulars are offered on the understanding that all negotiations are conducted through this company.
- These details and photographs have been prepared for "Novus Residential" in good faith and as a general guide, not a statement of fact.
- Neither these particulars, nor oral representations, form part of any offer or contract and their accuracy cannot be guaranteed.
- Any floor plan provided is for representation purposes only, measurements are approximate and should not be relied upon, whilst every attempt has been made to ensure their accuracy the measurements of windows, doors and rooms are approximate and should be used as such by prospective purchasers.
- We have not tested any services, systems and appliances mentioned and we cannot verify that they are in working order.
- Should you have a query or complaint about our service, please contact us at move@novusresidential.co.uk

Council Tax: **Band D £1,701 (Barnet)**

SECOND FLOOR
538 sq. ft. (50.0 sq. m.) approx.



Girton Court, N20

TOTAL FLOOR AREA : 538sq. ft. (50.0 sq. m.) approx.

Whilst every attempt has been made to ensure the accuracy of the floorplan contained here, measurements of doors, windows, rooms and any other items are approximate and no responsibility is taken for any error, omission or mis-statement. This plan is for illustrative purposes only and should be used as such by any prospective purchaser. The services, systems and appliances shown have not been tested and no guarantee as to their operability or efficiency can be given.
Made with Metropix ©2019

