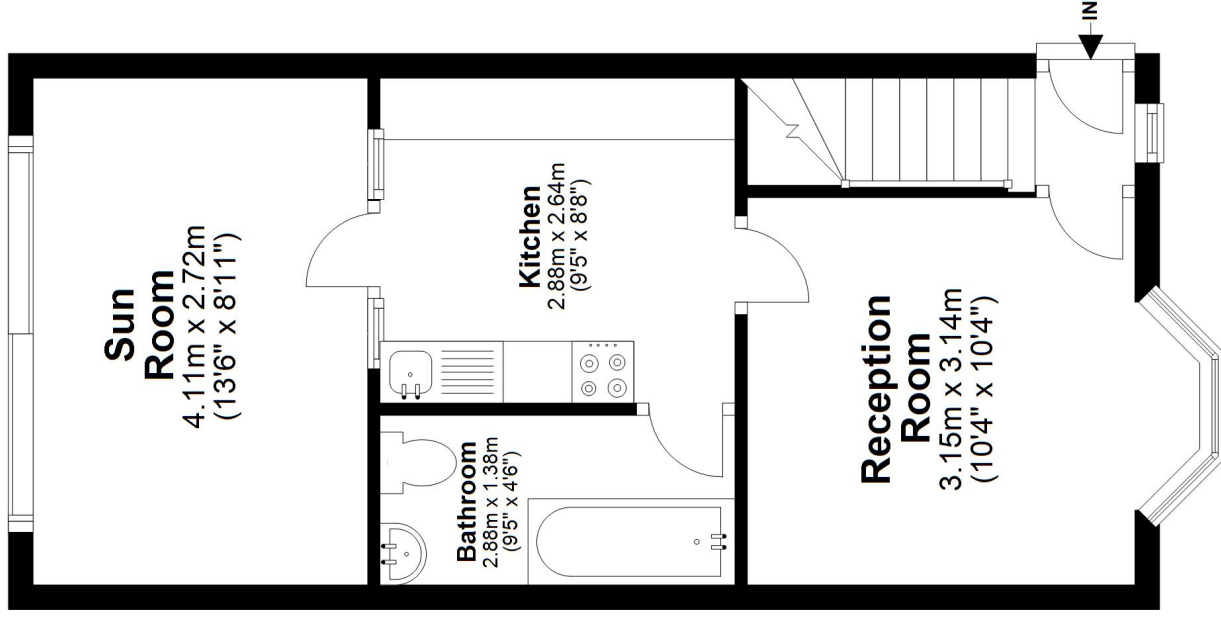


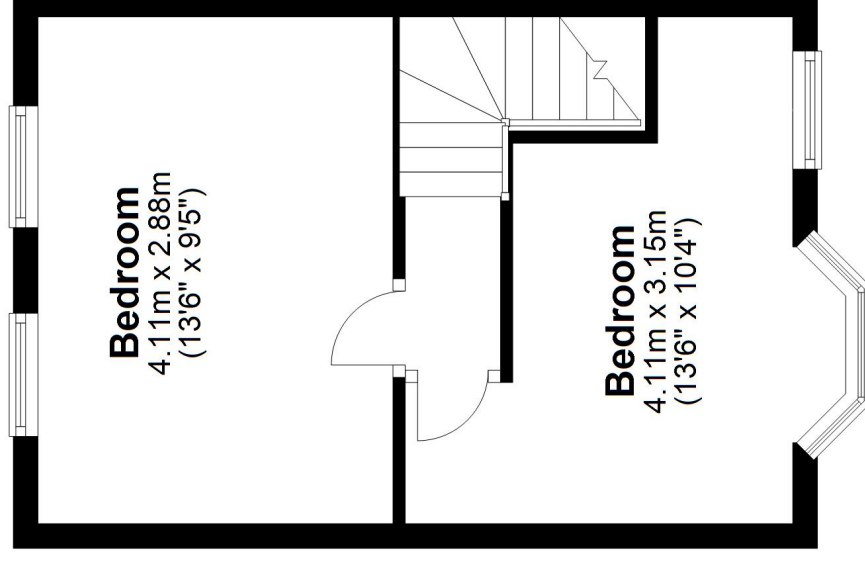
Ground Floor

Approx. 37.0 sq. metres (398.1 sq. feet)



First Floor

Approx. 25.4 sq. metres (273.2 sq. feet)



Total area: approx. 62.4 sq. metres (671.4 sq. feet)

Plan and measurements are for guidance only. Floor plan produced by Propertytics.co.uk.

www.propertytics.co.uk

Plan produced using PlanUp.