

NOVUS Residential

SALES
LETTINGS
MANAGEMENT

BUCKLER COURT (VIZION 7), EDEN GROVE, N7



A stunning, two double bedroom, two bathroom penthouse apartment located upon the sixth floor (lift) of this prestigious development which benefits from a private (1,000 sq ft) terrace with stunning views across London. The accommodation, which extends to approximately 1,100 sq ft, comprises large entrance with utility cupboard and doors to: large reception room with semi-open plan (fully applianced) kitchen and French doors leading out to south facing terrace, master bedroom suite with in-built wardrobes and ensuite shower room, further double bedroom and family bathroom suite. The property features wood flooring to principle rooms, UPVC double glazing throughout and uninterrupted views across the London skyline incorporating many of its prestigious landmarks. Block benefits include 24-hour concierge service, well maintained communal gardens and a resident's gymnasium.

Buckler Court is located upon Eden Grove and one of the feature buildings within the Vizion7 development (part of the large infrastructure upgrade in collaboration with the relocation of Arsenal Football Club). This has seen significant investment in the surrounding area, numerous quality retailers are to be found locally and transport options abound; Holloway and Caledonian Road Underground stations (Piccadilly Line) are close by with Drayton Park (Thameslink) Overground Station providing regular commuter access to both London's Moorgate and Kings Cross Stations. Additionally, Islington's famed Upper Street and the green open spaces of Highbury Fields are also easily accessible.

£2,050 PCM

Part/Un-Furnished

Available April

0208 350 8936

move@novusresidential.co.uk

rightmove 
find your happy

ZPG

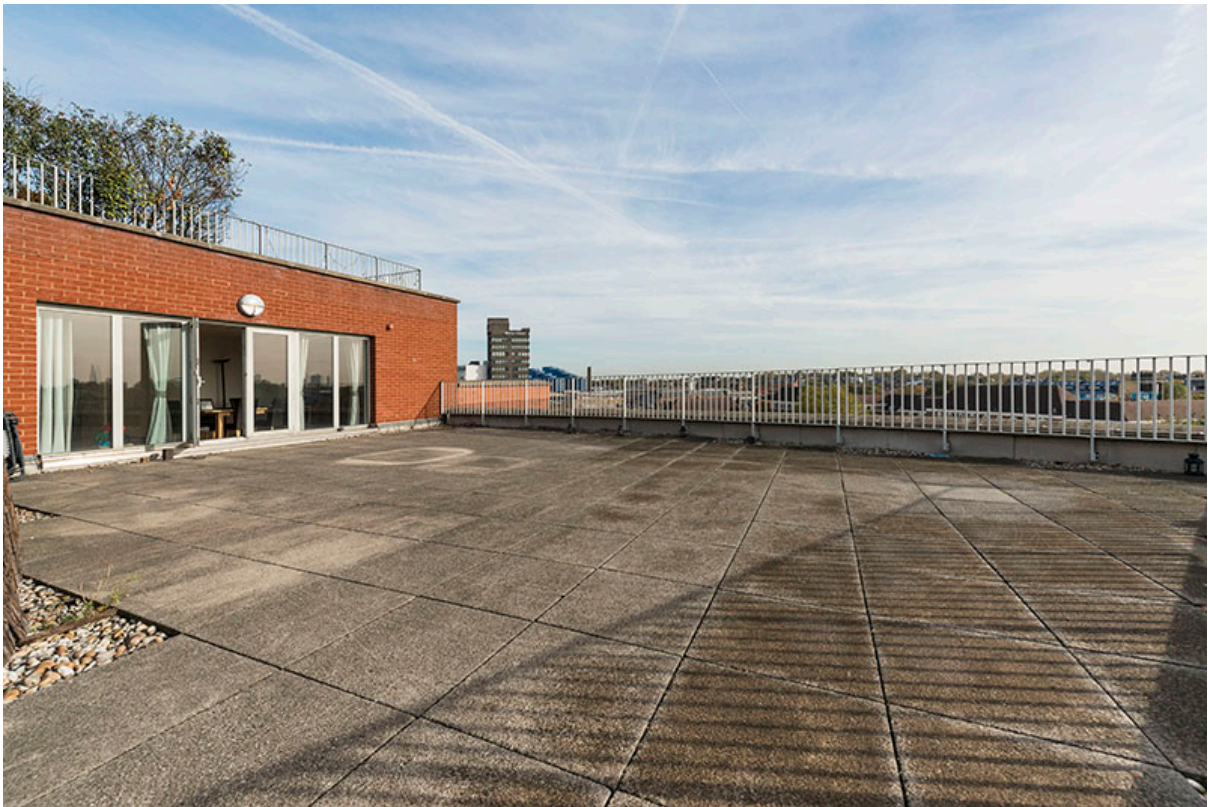
PRS Property
Redress
Scheme



Council Tax - F £2,336 (Islington)





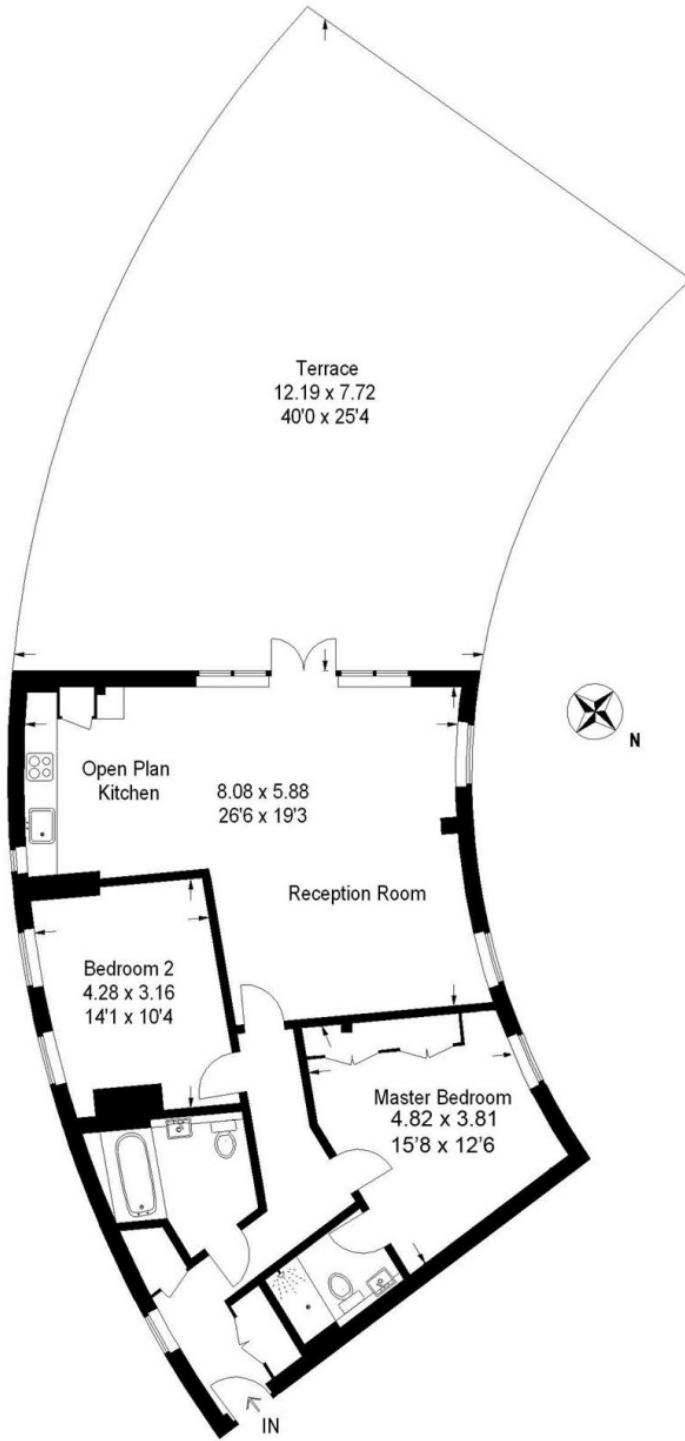




- These particulars are offered on the understanding that all negotiations are conducted through this company.
- These details and photographs have been prepared for "Novus Residential" in good faith and as a general guide, not a statement of fact.
- Neither these particulars, nor oral representations, form part of any offer or contract and their accuracy cannot be guaranteed.
- Any floor plan provided is for representation purposes only, measurements are approximate and should not be relied upon, whilst every attempt has been made to ensure their accuracy the measurements of windows, doors and rooms are approximate and should be used as such by prospective purchasers.
- We have not tested any services, systems and appliances mentioned and we cannot verify that they are in working order.
- Should you have a query or complaint about our service, please contact us at move@novusresidential.co.uk.

Buckler Court

Approximate Gross Internal Area = 95 sq m / 1022 sq ft



Sixth Floor

Illustration for identification purposes only, measurements are approximate, not to scale.
FloorplansUsketch.com © 2014 (ID104739)